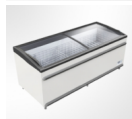


## BODRUM 2100 FR



Rating: Not Rated Yet

**Price:**

Variant price modifier:

Base price with tax:

Price with discount:

Salesprice with discount:

Sales price:

Sales price without tax:

Discount:

Tax amount:

[Ask a question about this product](#)

Description

**Product Details**

**Market Type Freezers and Coolers**

- Electronical heat controls system
- Adjustable leg
- Plastic frame
- Water drainage
- Wide and practical capacity
- Low energy consumption thanks to electronical audits

- Maintenance-free cooling system
- Design that enables different placement arrangements inside the market
- Low investment and operation cost

Technical Details

Technical Feature Title	Feature	Unit
Climate Class	3	
Freezer net volume (Net/Gross)	653 / 912	Lt
Packaged External dimensions (WxDxH)	2170 x 920 x 1000	mm
Cooler net volume (Net/Gross)	653 / 912	LT
Internal dimensions (WxDxH)	1970 x 720 x 600	mm
External dimensions (WxDxH)	2016 x 858 x 890	mm
Loading Capacity [20 ft. Kont./40 ft. Kont./83m3]	12 / 26 / 26	
Coolant fluid	R404a / R290	
Power supply	230 / 50	V/Hz/Faz
Operating Range	-18 / -23	C °
Weight (Net/Gross)	152 / 170	Kg

Reviews

There are yet no reviews for this product.